



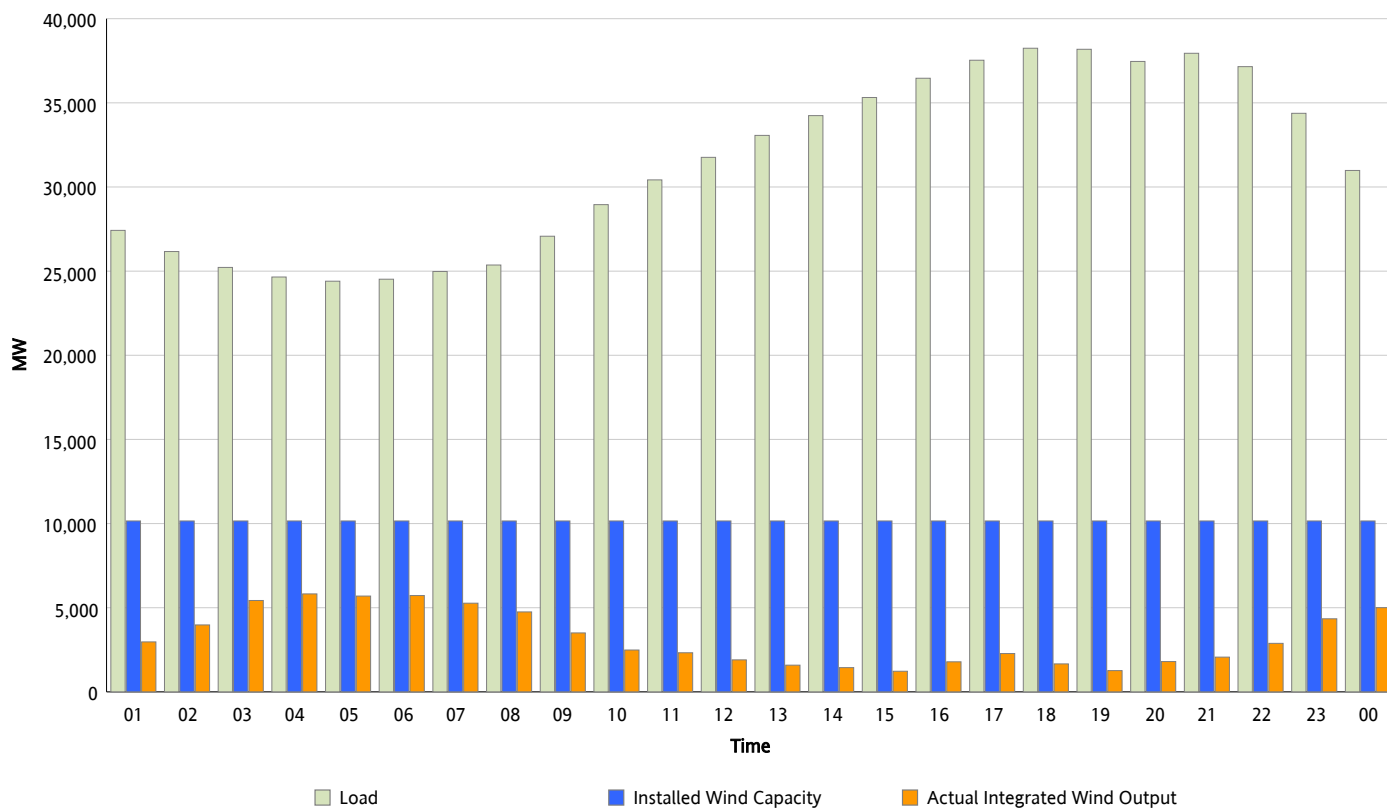
ERCOT Grid Operations

Wind Integration Report : 04/28/2013

Peak Load	38,245 MW
Load Peak Hour (HE)	18
Wind Over Peak	1,663 MW
Wind Record 02/09/13	9,481 MW
Max Wind Value*	6,089 MW
Wind Peak Time	03:10
Wind Integration %	24.62 %

Hourly Average Actual Load vs. Actual Wind Output

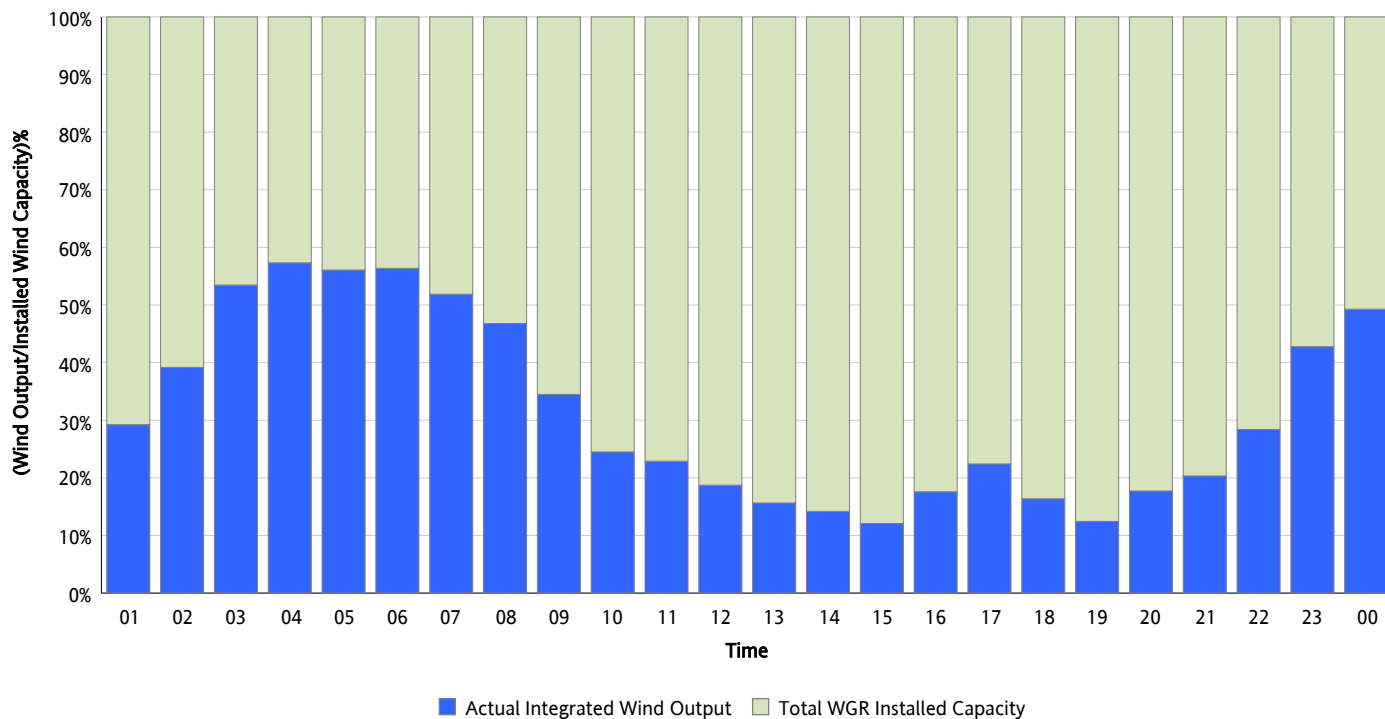
04/28/2013



* Wind Record and Wind Max represent instantaneous values and the rest of the values are integrated over the hour

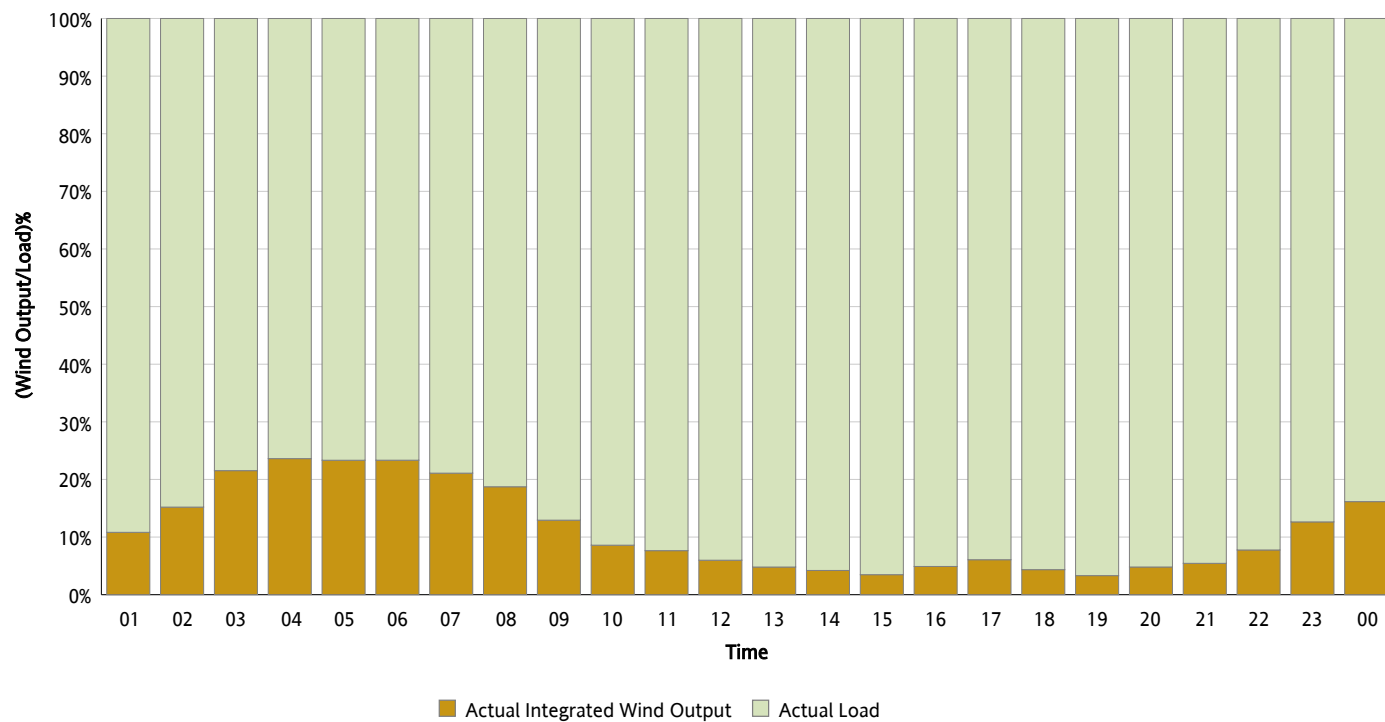
Actual Wind Output as a Percentage of the Total Installed Wind Capacity

04/28/2013



Actual Wind Output as a Percentage of the ERCOT Load

04/28/2013



ERCOT Load vs. Actual Wind Output

04/21/2013 - 04/28/2013

